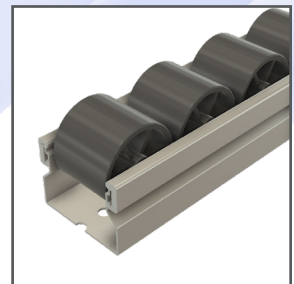
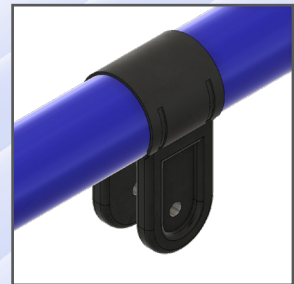
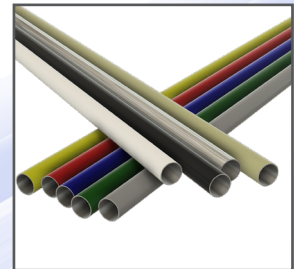


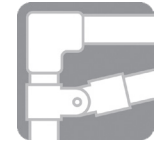
Lean Tubing and Components



- Economical Solutions for Lean Manufacturing
- Components Compatible with Industry 28mm Dia. Tubing
- Stock Lengths Available in 2M and 4M Bars
- Gravity Roller Tracks



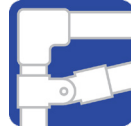
About Us



**LEAN
PRODUCTS**



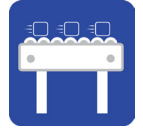
Aluminum Profile



Lean Tube

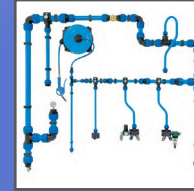
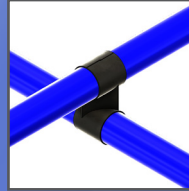
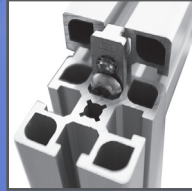


Quick Pipe



Conveyors

- Equipment Guarding
- Shelving
- Custom Racks
- Carts
- Work Stations
- Conveyors
- Stands
- Quick Pipe Systems
- Tables
- Enclosures
- Bulk Aluminum Profile



Modular Solutions is an all in one source for aluminum profile, lean tube, quick air pipe and conveyor systems. Whether a custom build or a bulk product quote our knowledgeable staff can assist you in offering the best solutions for your application.

We pride ourselves on offering innovative products, selection tools and services that simplify the process of ordering and assembly thus offering increased value and time savings.

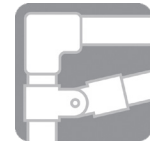
Modular Solutions serves such industries as Automotive, Automation, Material Handling, Wheel & Tire, Food & Beverage, Commercial Contractors and Property Management.

- Helpful Support:
- Engineers
- Dedicated Customer Service
- Outside Sales Staff
- Onsite Installation Available
- Samples & Demos Available Upon Request

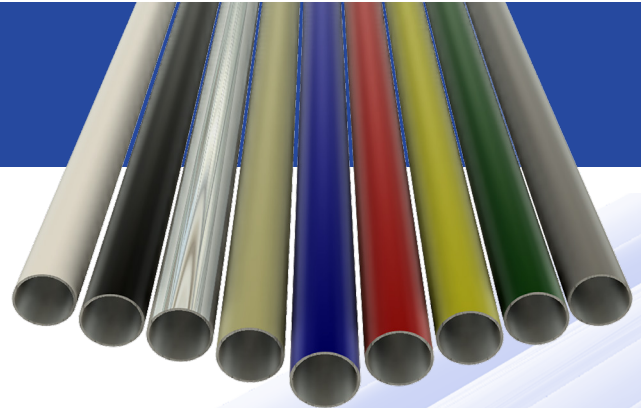


Our biggest goal at Modular Solutions is to provide our customers with unparalleled service to help them through every stage of their project, no matter how big or small. Our friendly and knowledgeable Customer Service and Tech Support branches are more than happy to assist with anything our customers may need! Our outside sales staff are available to bring by samples or show demonstrations of our innovative products. We also offer onsite assembly and installation for many of our build items.

We welcome any feedback you may have, whether it's a suggestion, question, or simply a check-in on an order. Feel free to reach out to us at any time!

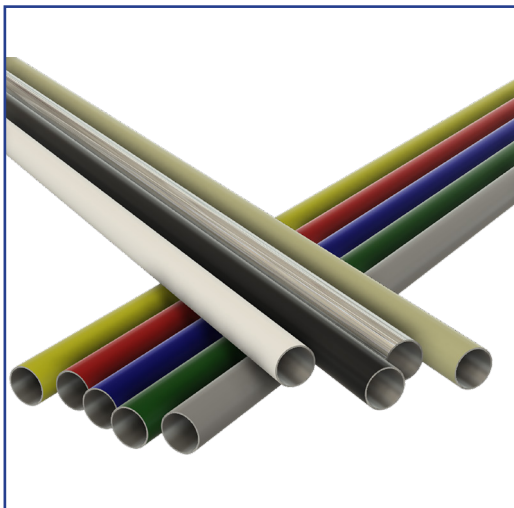


Lean Tubing



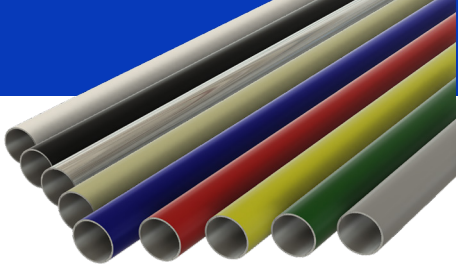
- 1 mm Wall Tubing Available in White, Ivory, Red, Blue & Black
- 0.8 mm Wall Stainless Steel
- Stock Lengths Available in 2M and 4M Bars
- 4M Bars Sold in Packs of 10 Only
- Custom Colors are Also Available Upon Request

Description	Color:	2000mm Part No:	4000mm Part No:
White 1mm Wall Tube		H-2000-WHT	H-4000-WHT
Ivory 1mm Wall Tube		H-2000-IVO	H-4000-IVO
Blue 1mm Wall Tube		H-2000-BLU	H-4000-BLU
Black 1mm Wall Tube		H-2000-BLK	H-4000-BLK
Red 1mm Wall Tube		H-2000-RED	H-4000-RED
Stainless Steel 0.8mm Wall Tube		H-2000-SS	H-4000-SS

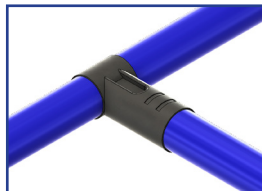




Metal Joint Seats



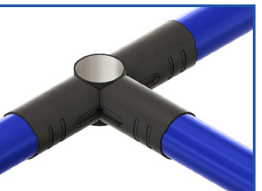
- Economical Solutions for Lean Manufacturing
- Components Compatible with Industry 28mm Dia. Tubing
- Components Sold as Complete Assemblies
- Electrophoretic Coating/Chrome Plated



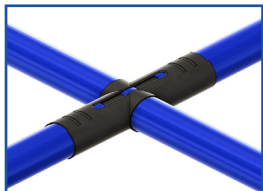
HJ-1



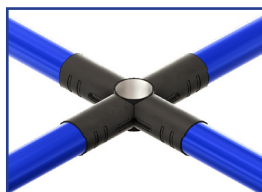
HJ-2



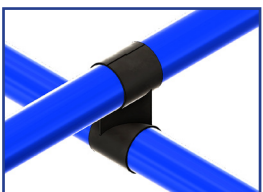
HJ-3



HJ-4



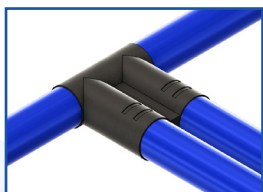
HJ-5



HJ-6



HJ-7



HJ-9



HJ-8



HJ-10



HJ-13



HJ-12



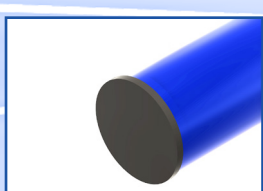
ELB-401B



HJ-90



HJ-180



J-110



TX-0013



EF-1206S



J-105W

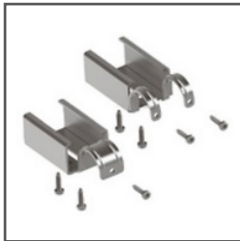
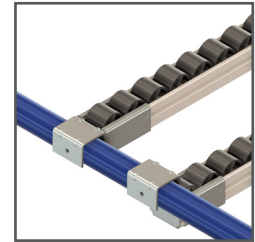


Roller Track Attachments

Lean Rollers Brackets



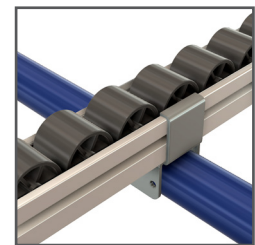
Description	Part No:
Flush Rigid Mounting Bracket	79-110-0
Recessed Rigid Mounting Bracket	79-120-0



Description	Part No:
Flush Inline Mounting Bracket 2 Prong	79-130-0
Flush Inline Mounting Bracket 1 Prong	79-140-0

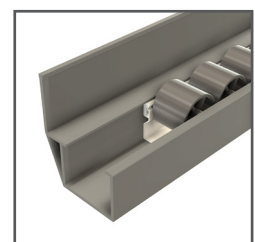
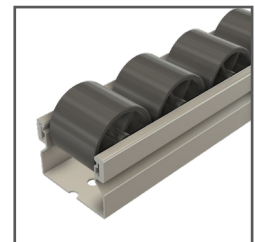


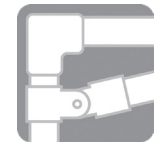
Description	Part No:
Above Tube Mounting Bracket	79-150-0



Lean Rollers Tracks

Description	Part No:
Roller Track R28 - Grey - 2000mm Long	79-010-0
Roller Track R28 - Grey - 4500mm Long	79-020-0
Roller Track R28F - Grey - 2000mm Long	79-030-0
Roller Track R28F - Grey - 4500mm Long	79-040-0
32mm Lateral Guide Rail - Grey - 2000mm Long	79-210-0
32mm Lateral Guide Rail - Grey - 4500mm Long	79-220-0
Roller tracks not included with lateral guide rails	

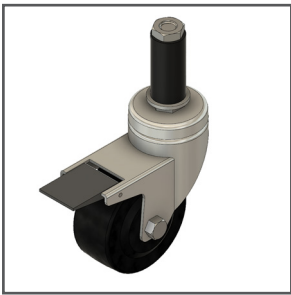




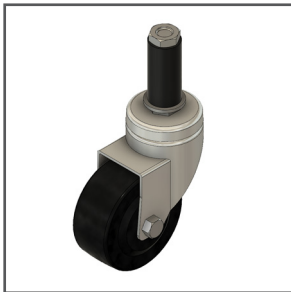
Tube Casters & Accessories

Casters

Available with 50mm, 75mm, 100mm, or 125mm wheels
Mount by pushing into end of tube

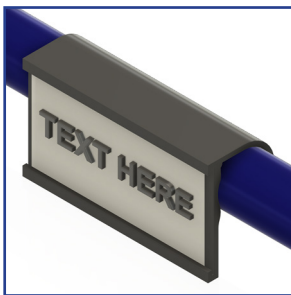


Description	Part No:
50mm Swivel Caster with Brake, PU	31-STD2PU-1
75mm Swivel Caster with Brake, PU	31-STD3PU-1
100mm Swivel Caster with Brake, PU	31-STD4PU-1
125mm Swivel Caster with Brake, PU	31-STD5PU-1

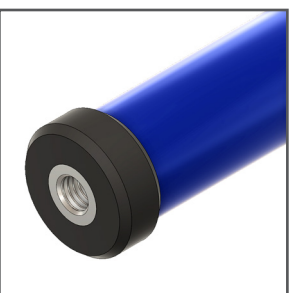


Description	Part No:
50mm Swivel Caster No Brake, PU	31-STD2PU-0
75mm Swivel Caster No Brake, PU	31-STD3PU-0
100mm Swivel Caster No Brake, PU	31-STD4PU-0
125mm Swivel Caster No Brake, PU	31-STD5PU-0

Tube Accessories



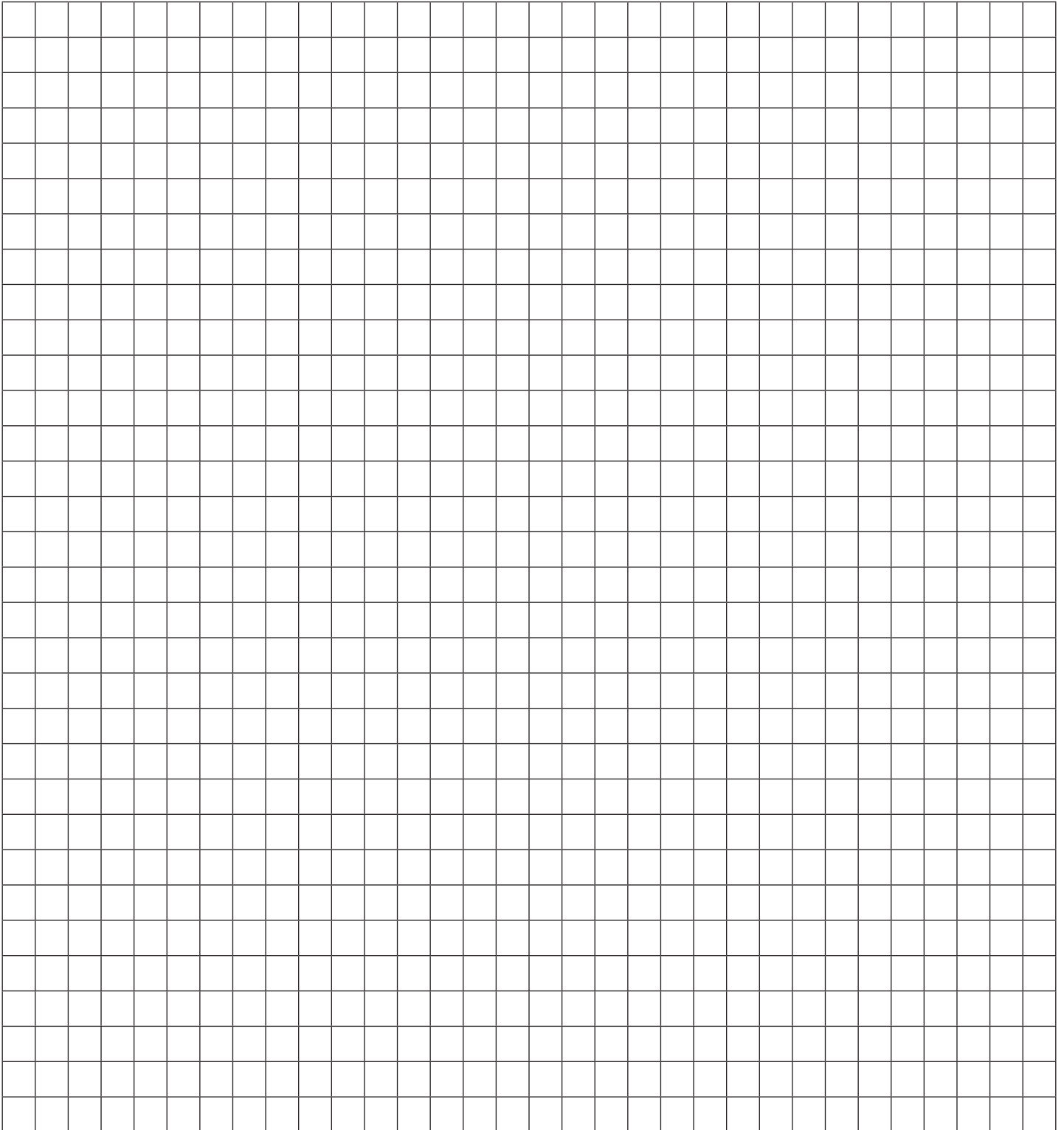
Description	Part No:
Plastic Label Clip	MS-02



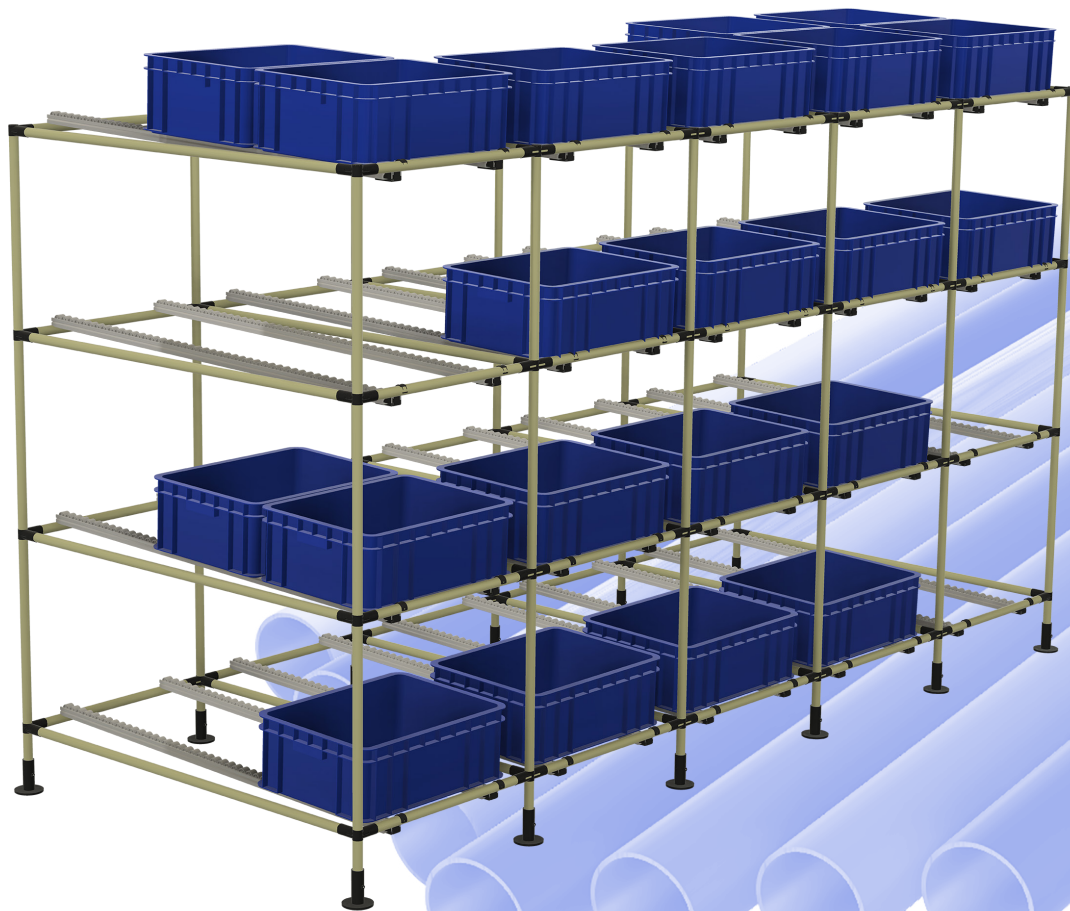
Description	Part No:
Black Cap with M10 Thread	JL-49



Quick Sketch Area



Your Source for Lean Tubing and Components



Modular Solutions

P. 248-625-8890

2704 Paldan Dr.
Auburn Hills, MI 48326

the-modular-solution.com